

# Self-Propelled Telescopic Booms

S®-80 XC™ & S®-85 XC™

## Specifications

Models	S-80 XC		S-85 XC	
Measurements	US	Metric	US	Metric
Working height maximum*	86 ft	26.27 m	91 ft	27.74 m
Platform height maximum	80 ft	24.38 m	85 ft	25.91 m
Horizontal reach maximum	68 ft 6 in	20.88 m	74 ft 6 in	22.71 m
Below ground reach	5 ft 6 in	1.68 m	8 ft 8 in	2.64 m
<b>A</b> Platform length - 8 ft model	3 ft	0.91 m	3 ft	0.91 m
Platform length - 6 ft model	2 ft 6 in	0.76 m	2 ft 6 in	0.76 m
<b>B</b> Platform width - 8 ft model	8 ft	2.44 m	8 ft	2.44 m
Platform width - 6 ft model	6 ft	1.83 m	6 ft	1.83 m
<b>C</b> Height - stowed	9 ft 2 in	2.80 m	9 ft 2 in	2.80 m
<b>D</b> Length - stowed	37 ft 7 in	11.23 m	40 ft 7 in	12.37 m
Length - transport (jib tucked under)	—	—	33 ft 8 in	10.25 m
<b>E</b> Width	8 ft 2 in	2.49 m	8 ft 2 in	2.49 m
<b>F</b> Wheelbase	9 ft 4 in	2.85 m	9 ft 4 in	2.85 m
<b>G</b> Ground clearance - center	15.8 in	40 cm	15.8 in	40 cm

## Productivity

Maximum lift capacity - unrestricted	660 lb	300 kg	660 lb	300 kg
- restricted	1,000 lb	454 kg	1,000 lb	454 kg
Platform rotation	160°		160°	
Vertical jib rotation	—		133°	
Turntable rotation	360° continuous		360° continuous	
Turntable tailswing	5 ft 3 in	1.6 m	5 ft 3 in	1.6 m
Drive speed - stowed	3.0 mph	4.8 km/h	3.0 mph	4.8 km/h
- raised/extended	0.5 mph	0.2 m/s	0.5 mph	0.2 m/s
Gradeability - stowed**	45%		45%	
Tilt sensor activation	front to back: 7° and side to side: 5°			
Turning radius: inside	12 ft	3.66 m	12 ft	3.66 m
outside	21 ft 6 in	6.55 m	21 ft 6 in	6.55 m
Controls	12V DC proportional		12V DC proportional	
Tires - RT lug	Foam filled 18-625, 16 ply		Foam filled 18-625, 16 ply	

## Power

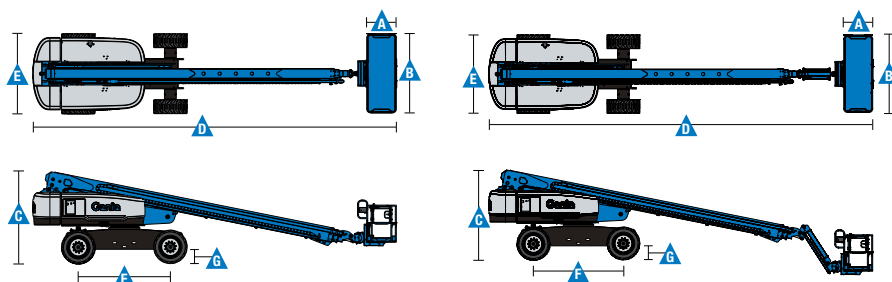
Power source	74 hp (55 kW) Deutz turbo diesel, Tier 4f, 2.9 L 58 hp (43.25 kW) Perkins turbo diesel, Tier 4, 404D-22T 70 hp (52.2 kW) GM gas/LPG 3.0L			
Auxiliary power unit	12V DC		12V DC	
Hydraulic tank capacity	40 gal	150 L	40 gal	150 L
Fuel tank capacity - diesel	35 gal	132 L	35 gal	132 L
- gas/LPG	30 gal	114 L	30 gal	114 L

## Weight\*\*\*

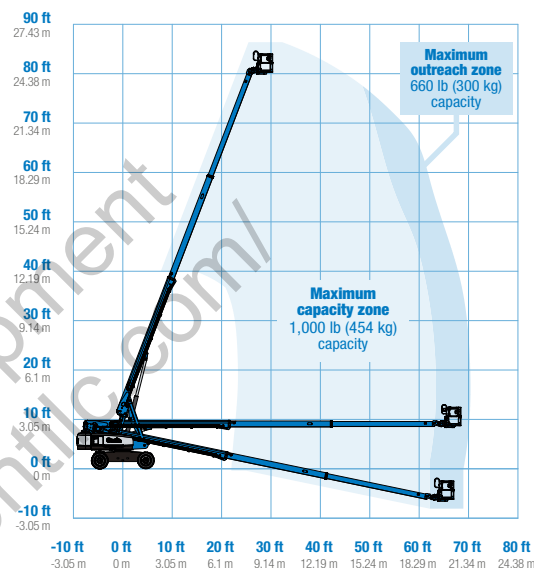
37,000 lb	16,783 kg	39,500 lb	17,917 kg
-----------	-----------	-----------	-----------

## Standards Compliance

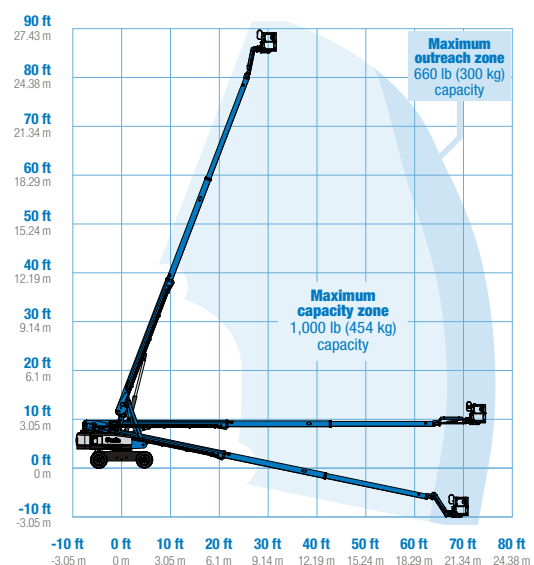
ANSI A92.20, CSA B354.6, EN 280, AS 1418.10



## Range Of Motion S-80 XC



## Range Of Motion S-85 XC



\* The metric equivalent of working height adds 2 m to platform height. U.S. adds 6 ft to platform height.

\*\* Gradeability applies to driving on slopes. See operator's manual for details regarding slope ratings.

\*\*\* Weight will vary depending on options and/or country standards.

# Self-Propelled Telescopic Booms

S<sup>®</sup>-80 XC<sup>™</sup> & S<sup>®</sup>-85 XC<sup>™</sup>

## Features

Standard Features	Easily Configured To Meet Your Needs	Options & Accessories
<b>Measurements</b> <p><b>S-80 XC</b></p> <ul style="list-style-type: none"> <li>86 ft (26.38 m) working height</li> <li>68 ft 6 in (20.88 m) horizontal reach</li> <li>660 lb (300 kg) unrestricted and 1,000 lb (454 kg) restricted lift capacity</li> </ul> <p><b>S-85 XC</b></p> <ul style="list-style-type: none"> <li>91 ft (27.74 m) working height</li> <li>74 ft 6 in (22.71 m) horizontal reach</li> <li>660 lb (300 kg) unrestricted and 1,000 lb (454 kg) restricted lift capacity</li> </ul> <p><b>Productivity</b></p> <ul style="list-style-type: none"> <li>Self-leveling platform</li> <li>160° hydraulic platform rotation</li> <li>Proportional joystick controls</li> <li>Drive enable</li> <li>AC power cord to platform</li> <li>Horn</li> <li>Hour meter</li> <li>Tilt alarm</li> <li>Descent alarm</li> <li>360° continuous turntable rotation</li> <li>Positive traction four wheel drive</li> <li>Two speed wheel motors</li> <li>Platform Load sense system</li> <li>Entry Toeboard</li> <li>Hydraulic oil cooler</li> <li>Alarm package</li> <li>Lift Tools<sup>™</sup> Work Tray</li> <li>Lift Connect<sup>™</sup> Telematics</li> <li>Lift Guard<sup>™</sup> Contact Alarm</li> <li>Active oscillation</li> </ul> <p><b>Power</b></p> <ul style="list-style-type: none"> <li>12V DC auxiliary power</li> <li>Anti-restart engine protection</li> <li>Auto engine fault shutdown</li> </ul>	<p><b>Platform Options</b></p> <ul style="list-style-type: none"> <li>Steel 6 ft (1.83 m) dual entry with side swing gate</li> <li>Steel 8 ft (2.44 m) tri-entry with side swing gate (standard)</li> </ul> <p><b>Jib Options</b></p> <ul style="list-style-type: none"> <li>Non-jib (S-80 XC only)</li> <li>5 ft (1.52 m) jib boom (S-85 XC only)</li> </ul> <p><b>Engine Options</b></p> <ul style="list-style-type: none"> <li>74 hp (55.18 kW) Deutz turbo diesel T4f* (standard)</li> <li>58 hp (43.25 kW) Perkins turbo diesel T4f*</li> <li>70 hp (52.2 kW) GM gas/LPG</li> </ul> <p><b>Tire Options</b></p> <ul style="list-style-type: none"> <li>Rough terrain foam-filled (standard)</li> <li>Rough terrain non-marking foam-filled</li> </ul>	<p><b>Productivity Options</b></p> <ul style="list-style-type: none"> <li>Lift Guard Platform Mesh - Half</li> <li>Lift Guard Platform Mesh - Full</li> <li>Lift Guard Platform Mesh - Screen (8ft platform only)</li> <li>Platform top auxiliary rail</li> <li>Lift Power<sup>™</sup> <ul style="list-style-type: none"> <li>3 kW AC Generator</li> <li>12 kW 240 V / 60 Hz Welder Ready package</li> <li>12 kW Welder Equipped, Select Lincoln or Miller (12 kW options include a fire extinguisher and fireproof sleeves)</li> </ul> </li> <li>Lift Tools Access Deck*</li> <li>Lift Tools Expo Installer*</li> <li>Air line to platform</li> <li>Specialty hydraulic oil (cold weather, fire resistant, or biodegradable)</li> <li>Hostile environment kit</li> <li>Deluxe hostile environment kit</li> <li>Aircraft protection package (6 ft platform only)</li> <li>Thumb rockersteer</li> <li>Panel cradle package</li> <li>Lockable platform control box covers</li> <li>Tow package</li> <li>Work light package</li> <li>Operator Protective Structure**</li> <li>Fall Arrest Bar</li> </ul> <p><b>Power Options</b></p> <ul style="list-style-type: none"> <li>Cold Weather Packages</li> <li>Diesel scrubber/muffler (catalytic muffler)</li> <li>LPG tank only, steel, 33.5 lb (15.19 kg) capacity</li> <li>Intake air pre-cleaner</li> <li>Positive air shutoff system (Deutz engine only)</li> </ul> <p>* Also available as Tier 4i in limited regions ** Available through aftermarket parts only</p>



### Genie United States

6464 185th Ave. NE  
Redmond, WA 98052  
Telephone +1 (425) 881-1800  
Toll Free in USA/Canada +1 (800)-536-1800  
Fax +1 (425) 883-3475

### Distributed By:



Effective Date: December, 2019. Product specifications and prices are subject to change without notice or obligation. The photographs and/or drawings in this document are for illustrative purposes only. Refer to the appropriate Operator's Manual for instructions on the proper use of this equipment. Failure to follow the appropriate Operator's Manual when using our equipment or to otherwise act irresponsibly may result in serious injury or death. The only warranty applicable to our equipment is the standard written warranty applicable to the particular product and sale and we make no other warranty, express or implied. Products and services listed may be trademarks, service marks or trade names of Terex Corporation and/or their subsidiaries in the USA and many other countries. Terex, Genie and AWP are registered trademarks of Terex Corporation or its subsidiaries. © 2019 Terex Corporation.